

# wall mounting socket outlet - 7 poles, housing dimensions 126x83

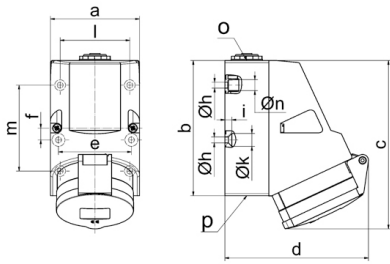


Product description	
BALS-Prd.-Nr	11480
EAN	4024941114806
Product category	TE wall mounting socket outlet
Current	16A
Number of poles	7p
Arrangement of phases	6p+PE
Position of earth contact	9 h
Voltage	230V~

Product description	
Frequency	50/60Hz
Protection degree	IP44
Colour code	blue RAL 5015
Colour of appliance	Hinged lid blue RAL 5015, Housing bottom grey RAL 7035, Housing top grey RAL 7035, Collar grey RAL 7035
Connection design	with screw terminal
Maximum conductor size	4,0 qmm
Cable entry	1xM25 top, 2xM25 bottom
Height	154mm
Width	83mm
Depth	130mm
Dimension of enclosure	126x83 mm (HxW)
Material of enclosure	Polyamide
Contacts	The contact carrier is made of high temperature resistant material, the contacts are brass nickel plated

Additional technical information	
	The cable entry is one at top open and two at bottom closed
	Lower part of housing rotatable by 180°
	4 cut out fixing holes in the lower part of housing

Logistics data	
Weight/pcs	0.373 kg / Piece
Packaging	Bag
Content amount	1 ST
EAN	4024941114806
Length	130 mm
Width	83 mm
Height	154 mm
Weight	0.374 kg
Volume	1,661.66 ccm
Packaging	Carton
Content amount	10 ST
EAN	4024941969352
Length	330 mm
Width	216 mm
Height	260 mm
Weight	3.956 kg
Volume	17,062.5 ccm



1 MB 124

Ampere	16	32					
Polzahl	7	7					
a	83,0	83,0					
b	126,0	126,0					
c	155,0	155,0					
d	130,0	136,0					
e	68,0	68,0					
f	11,0	11,0					
h ø	5,5	5,5					
i	6,5	6,5					
k ø	12,0	12,0					
l	65,0	65,0					
m	80,0	80,0					
n ø	10,0	10,0					
o	M25	M25					
p	2 x M25	2 x M25					
Leiter mm <sup>2</sup> min	1,5	2,2					
Leiter mm <sup>2</sup> max	4	10					