

# Wall mounting socket outlet - 7 poles housing dimensions 126x83

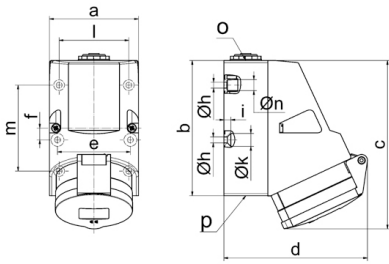


| Product description       |                             |
|---------------------------|-----------------------------|
| BALS-Prd.-Nr              | 11482                       |
| EAN                       | 4024941114820               |
| Product category          | Wall mounting socket outlet |
| Current                   | 32A                         |
| Number of poles           | 7p                          |
| Arrangement of phases     | 6p+PE                       |
| Position of earth contact | 9 h                         |
| Voltage                   | 230V~                       |

| Product description    |   |
|------------------------|---|
| Frequency              | 50/60Hz   |
| Protection degree      | IP44  |
| Colour code            | blue RAL 5015   |
| Colour of appliance    | Hinged lid blue RAL 5015, Housing bottom grey RAL 7035, Housing top grey RAL 7035, Collar grey RAL 7035 |
| Connection design      | with screw terminal   |
| Maximum conductor size | 10,0 qmm  |
| Cable entry            | 1xM25 top, 2xM25 bottom   |
| Height                 | 157mm   |
| Width                  | 83mm  |
| Depth                  | 136mm   |
| Dimension of enclosure | 126x83 mm (HxW)   |
| Material of enclosure  | Polyamide   |
| Contacts               | the contact carrier is made of high temperature resistant material, the contacts are brass              |

| Additional technical information |   |
|----------------------------------|---|
|                                  | The cable entry is one at top open and two at bottom closed |
|                                  | Lower part of housing rotatable by 180°                     |
|                                  | 4 cut out fixing holes in the lower part of housing         |

| Logistics data |                  |
|----------------|------------------|
| Weight/pcs     | 0.453 kg / Piece |
| Packaging      | Bag              |
| Content amount | 1 ST             |
| EAN            | 4024941114820    |
| Length         | 136 mm           |
| Width          | 83 mm            |
| Height         | 157 mm           |
| Weight         | 0.454 kg         |
| Volume         | 1,772.216 ccm    |
| Packaging      | Carton           |
| Content amount | 10 ST            |
| EAN            | 4024941959018    |
| Length         | 330 mm           |
| Width          | 216 mm           |
| Height         | 260 mm           |
| Weight         | 4.756 kg         |
| Volume         | 17,062.5 ccm     |



1 MB 124

| Ampere                     | 16      | 32      |  |  |  |  |  |
|----------------------------|---------|---------|--|--|--|--|--|
| Polzahl                    | 7       | 7       |  |  |  |  |  |
| a                          | 83,0    | 83,0    |  |  |  |  |  |
| b                          | 126,0   | 126,0   |  |  |  |  |  |
| c                          | 155,0   | 155,0   |  |  |  |  |  |
| d                          | 130,0   | 136,0   |  |  |  |  |  |
| e                          | 68,0    | 68,0    |  |  |  |  |  |
| f                          | 11,0    | 11,0    |  |  |  |  |  |
| h ø                        | 5,5     | 5,5     |  |  |  |  |  |
| i                          | 6,5     | 6,5     |  |  |  |  |  |
| k ø                        | 12,0    | 12,0    |  |  |  |  |  |
| l                          | 65,0    | 65,0    |  |  |  |  |  |
| m                          | 80,0    | 80,0    |  |  |  |  |  |
| n ø                        | 10,0    | 10,0    |  |  |  |  |  |
| o                          | M25     | M25     |  |  |  |  |  |
| p                          | 2 x M25 | 2 x M25 |  |  |  |  |  |
| Leiter mm <sup>2</sup> min | 1,5     | 2,2     |  |  |  |  |  |
| Leiter mm <sup>2</sup> max | 4       | 10      |  |  |  |  |  |

