

## Wall mounting socket outlet - housing dimensions 91x91



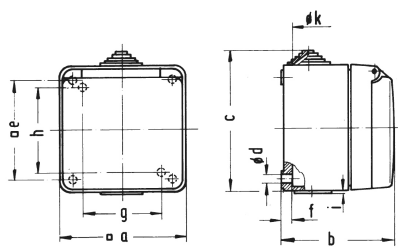
Product description	
BALS-Prd.-Nr	11554
EAN	4024941115544
Product category	Wall mounting socket outlet
Current	16A
Number of poles	3p
Arrangement of phases	2P+PE
Position of earth contact	4 h
Voltage	100 - 130V~
Frequency	50/60Hz

Product description	
Protection degree	IP44
Colour code	yellow RAL 1012
Colour of appliance	Hinged lid grey RAL 7035, Housing bottom grey RAL 7035, Enclosure grey RAL 7035
Connection design	with screw terminal
Maximum conductor size	4,0 qmm
Cable entry	Anti-kink sleeve
Height	100mm
Width	91mm
Depth	79.5mm
Dimension of enclosure	91x91 mm
Material of enclosure	Polyamide
Contacts	the contact carrier is made of polyamide, the contacts are brass

Additional technical information	
	The cable entry is one at top open and one at bottom and one rear side closed
	straight

Logistics data	
Weight/pcs	0.235 kg / Piece
Packaging	Bag
Content amount	1 ST

Logistics data	
EAN	4024941115544
Length	79.5 mm
Width	91 mm
Height	100 mm
Weight	0.236 kg
Volume	723.45 ccm
Packaging	Carton
Content amount	10 ST
EAN	4024941826723
Length	258 mm
Width	183 mm
Height	212 mm
Weight	2.502 kg
Volume	8,750 ccm



Ampere Polzahl	16 3	16 5	32 5				
a □	91,0	91,0	90,0				
b	79,5	79,5	93,0				
c	100,0	100,0	112,5				
d ø	5,5	5,5	5,5				
e □	73,0	73,0	-				
f	7,0	7,0	6,0				
g	-	-	58,0				
h ø	-	-	73,0				
i	-	-	1,5				
k ø	20,0 max.	20,0 max.	8,0/ 20,0				

4 MB 16