

wall mounting socket outlet - housing dimensions 100x75



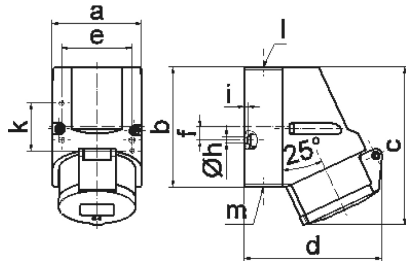
Product description	
BALS-Prd.-Nr	11935
EAN	4024941119351
Product category	Wall mounting socket outlet Quick-Connect
Current	16A
Number of poles	4p
Arrangement of phases	3P+PE
Position of earth contact	4 h
Voltage	100 - 130V~
Frequency	50/60Hz

Product description	
Protection degree	IP44
Colour code	yellow RAL 1012
Colour of appliance	Hinged lid yellow RAL 1012, Housing bottom grey RAL 7035, Housing top grey RAL 7035, Collar yellow RAL 1012
Connection design	screwless spring terminals with Kontex-Kontakt
Maximum conductor size	4,0 qmm
Cable entry	top entry M20
Height	129mm
Width	75mm
Depth	108mm
Dimension of enclosure	100x75 mm (HxW)
Material of enclosure	Polyamide
Contacts	The contacts are brass, The contact carrier is made of polyamide

Additional technical information	
	The cable entry is one at top open and one at bottom and one rear side closed
	Lower part of housing rotatable by 180°

Logistics data	
Weight/pcs	0.234 kg / Piece
Packaging	Bag

Logistics data	
Content amount	1 ST
EAN	4024941119351
Length	108 mm
Width	75 mm
Height	129 mm
Weight	0.235 kg
Volume	1,044.9 ccm
Packaging	Carton
Content amount	10 ST
EAN	4024941865654
Length	387 mm
Width	222 mm
Height	150 mm
Weight	2.533 kg
Volume	11,029.5 ccm



1 MB 7

Ampere	16	16	16			
Polzahl	3	4	5			
a	64,0	75,0	75,0			
b	87,0	100,0	100,0			
c	117,0	129,0	131,0			
d	103,0	108,0	116,0			
e	51,0	59,0	59,0			
f	-	11,0	11,0			
h ø	4,1	5,1	5,1			
i	4,5	4,5	4,5			
k	40,0	-	-			
l	M20	M20	M20			
m	für M20	für M20	für M20			
Leiter mm ² min	1,5	1,5	1,5			
Leiter mm ² max	4	4	4			