

Wall mounting socket outlet - housing dimensions 100x75



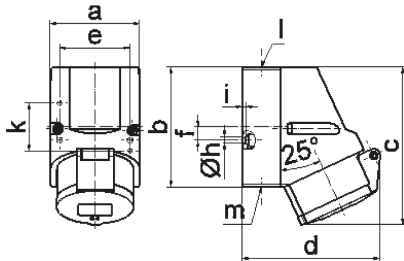
| Product description | |
|---------------------------|---|
| BALS-Prd.-Nr | 11941 |
| EAN | 4024941119412 |
| Product category | Wall mounting socket outlet QUICK-CONNECT |
| Current | 16A |
| Number of poles | 5p |
| Arrangement of phases | 3p+N+PE |
| Position of earth contact | 10 h |
| Voltage | > 50V~ |
| Frequency | 100 - 300Hz |

| Product description | |
|------------------------|---|
| Protection degree | IP44 |
| Colour code | green RAL 6002 |
| Colour of appliance | Hinged lid green RAL 6002, Housing bottom grey RAL 7035, Housing top grey RAL 7035, Collar green RAL 6002 |
| Connection design | screwless spring terminals with KONTEX-contact |
| Maximum conductor size | 4,0 qmm |
| Cable entry | top entry M20 |
| Height | 131mm |
| Width | 75mm |
| Depth | 116mm |
| Dimension of enclosure | 100x75 mm (HxW) |
| Material of enclosure | Polyamide |
| Contacts | the contact carrier is made of polyamide, the contacts are brass |

| Additional technical information | |
|----------------------------------|---|
| | The cable entry is one at top open and one at bottom and one rear side closed |
| | Lower part of housing rotatable by 180° |

| Logistics data | |
|----------------|------------------|
| Weight/pcs | 0.253 kg / Piece |
| Packaging | Bag |

| Logistics data | |
|----------------|---------------|
| Content amount | 1 ST |
| EAN | 4024941119412 |
| Length | 116 mm |
| Width | 75 mm |
| Height | 131 mm |
| Weight | 0.254 kg |
| Volume | 1,139.7 ccm |
| Packaging | Carton |
| Content amount | 10 ST |
| EAN | 4024941820196 |
| Length | 387 mm |
| Width | 222 mm |
| Height | 150 mm |
| Weight | 2.723 kg |
| Volume | 11,029.5 ccm |



1 MB 7

| Ampere | 16 | 16 | 16 | | | |
|----------------------------|---------|---------|---------|--|--|--|
| Polzahl | 3 | 4 | 5 | | | |
| a | 64,0 | 75,0 | 75,0 | | | |
| b | 87,0 | 100,0 | 100,0 | | | |
| c | 117,0 | 129,0 | 131,0 | | | |
| d | 103,0 | 108,0 | 116,0 | | | |
| e | 51,0 | 59,0 | 59,0 | | | |
| f | - | 11,0 | 11,0 | | | |
| h ø | 4,1 | 5,1 | 5,1 | | | |
| i | 4,5 | 4,5 | 4,5 | | | |
| k | 40,0 | - | - | | | |
| l | M20 | M20 | M20 | | | |
| m | für M20 | für M20 | für M20 | | | |
| Leiter mm ² min | 1,5 | 1,5 | 1,5 | | | |
| Leiter mm ² max | 4 | 4 | 4 | | | |