

panel mounting socket outlet, angled - flange 75x75,
fixing centers 60x60

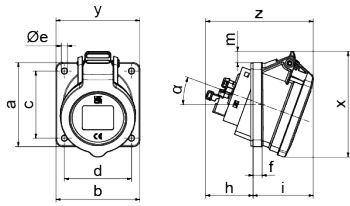


Product description	
BALS-Prd.-Nr	1220011
EAN	4024941379458
Product category	Panel mounting socket outlet INNOLINQ QUICK-CONNECT angled
Current	16A
Number of poles	5p
Arrangement of phases	3p+N+PE
Position of earth contact	6 h
Voltage	200/346 - 240/415V~

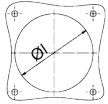
Product description	
Frequency	50/60Hz
Protection degree	IP54
Colour code	red RAL 3000
Colour of appliance	Hinged lid red RAL 3000, Enclosure grey RAL 7035
Connection design	screwless spring terminals with KONTEX-ULTRA contact
Maximum conductor size	4,0 qmm
Cable entry	other
Height	95mm
Width	75mm
Depth	97mm
Flange size vertical in mm	75mm
Flange size horizontal in mm	75mm
Drill hole dist. vertical mm	60mm
Drill hole dist. horizontal mm	60mm
Material of enclosure	Polyamide
Contacts	The contacts are brass, The contact carrier is made of high temperature resistant material

Additional technical information	
	The inclination is 20°, This product is without any lead

Logistics data	
Weight/pcs	0.141 kg / Piece
Packaging	Bag
Content amount	1 ST
EAN	4024941379458
Length	97 mm
Width	75 mm
Height	95 mm
Weight	0.142 kg
Volume	691.125 ccm
Packaging	Carton
Content amount	10 ST
EAN	4024941390323
Length	245 mm
Width	177 mm
Height	185 mm
Weight	1.543 kg
Volume	7,140 ccm



Einbauöffnung



4MB508

Ampere	16
Poles	5
a	75,0
b	75,0
c	60,0
d	60,0
Øe	5,5
f	8,0
h	43,0
i	54,0
Øl	70,0
m	11,0
x	95,0
y	75,0
z	97,0

