

Panel mounting socket outlet angled TN - flange 114x114  
fixing centers 90x90



Product description	
BALS-Prd.-Nr	12341
EAN	4024941123419
Product category	TN panel mounting socket outlet, angled
Current	63A
Number of poles	5p
Arrangement of phases	3p+N+PE
Position of earth contact	9 h
Voltage	120/208 - 144/250V~

Product description	
Frequency	50/60Hz
VG-type-no.:	VG 96919 BS 010
Protection degree	IP67
Colour code	bronze-green RAL 6031-F9
Colour of appliance	Bayonet ring bronze-green RAL 6031-F9, Hinged lid bronze-green RAL 6031-F9, Enclosure bronze-green RAL 6031-F9
Connection design	screw terminal as box terminal with Kontex-contact
Maximum conductor size	25.0 qmm
Cable entry	other
Height	124mm
Width	114mm
Depth	144mm
Flange size vertical in mm	114mm
Flange size horizontal in mm	114mm
Drill hole dist. vertical mm	90mm
Drill hole dist. horizontal mm	90mm
Material of enclosure	Polyamide
Contacts	the contact carrier is made of polyamide, the contacts are brass nickel plated

Additional technical information	
	The inclination is 15°, with pilot contact

**Additional technical information**

With bayonet cover on strap

**Logistics data**

Weight/pcs	0.63 kg / Piece
------------	-----------------

Packaging	Bag
-----------	-----

Content amount	1 ST
----------------	------

EAN	4024941123419
-----	---------------

Length	144 mm
--------	--------

Width	114 mm
-------	--------

Height	124 mm
--------	--------

Weight	0.631 kg
--------	----------

Volume	2,035.584 ccm
--------	---------------

Packaging	Carton
-----------	--------

Content amount	5 ST
----------------	------

EAN	4024941838726
-----	---------------

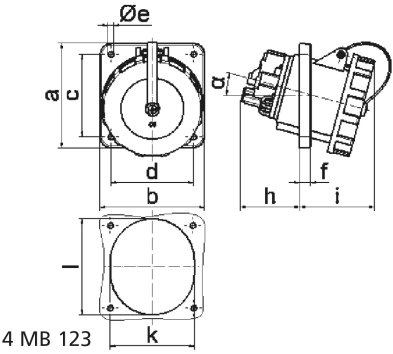
Length	295 mm
--------	--------

Width	185 mm
-------	--------

Height	215 mm
--------	--------

Weight	3.314 kg
--------	----------

Volume	9,975 ccm
--------	-----------



Ampere	63	63	63	125	125	125
Polzahl	3	4	5	3	4	5
a	114,0	114,0	114,0	114,0	114,0	114,0
b	114,0	114,0	114,0	114,0	114,0	114,0
c	90,0	90,0	90,0	90,0	90,0	90,0
d	90,0	90,0	90,0	90,0	90,0	90,0
e ø	5,5	5,5	5,5	6,5	6,5	6,5
f	12,0	12,0	12,0	12,0	12,0	12,0
h	65,0	65,0	65,0	82,0	82,0	82,0
i	82,0	82,0	82,0	90,0	90,0	90,0
k	92,0	92,0	92,0	92,0	92,0	92,0
l	92,0	92,0	92,0	105,0	105,0	105,0
α	15°	15°	15°	15°	15°	15°
Leiter mm² min	6,0	6,0	6,0	25,0	25,0	25,0
Leiter mm² max	25,0	25,0	25,0	70,0	70,0	70,0