

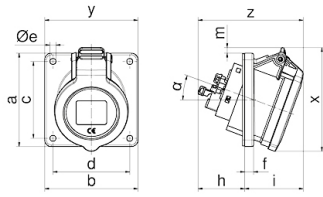
Panel mounting socket outlet angled - flange 85x85 fixing centers 70x70



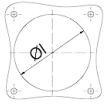
Product description	
BALS-Prd.-Nr	127571
EAN	4024941379731
Product category	Panel mounting socket outlet INNOLINQ QUICK-CONNECT angled
Current	16A
Number of poles	5p
Arrangement of phases	3p+N+PE
Position of earth contact	6 h
Voltage	200/346 - 240/415V~

Product description	
Frequency	50/60Hz
Protection degree	IP54
Colour code	red RAL 3000
Colour of appliance	Hinged lid red RAL 3000, Enclosure grey RAL 7035
Connection design	screwless spring terminals with KONTEX-ULTRA contact
Maximum conductor size	4,0 qmm
Cable entry	other
Height	95mm
Width	85mm
Depth	97mm
Flange size vertical in mm	85mm
Flange size horizontal in mm	85mm
Drill hole dist. vertical mm	70mm
Drill hole dist. horizontal mm	70mm
Material of enclosure	Polyamide
Contacts	the contacts are brass, the contact carrier is made of high temperature resistant material

Additional technical information	
	The inclination is 20°, this product is without any lead



Einbauöffnung



4MB504

Ampere	16	16	32
Poles	3	5	5
a	85,0	85,0	85,0
b	85,0	85,0	85,0
c	70,0	70,0	70,0
d	70,0	70,0	70,0
Øe	5,5	5,5	5,5
f	8,0	8,0	8,0
h	43,0	43,0	54,0
i	49,0	54,0	60,0
Øl	57,0	70,0	78,0
m	-	5,5	13,0
x	85,0	95,0	108,0
y	85,0	85,0	85,0
z	92,0	97,0	114,0
α	20°	20°	20°

