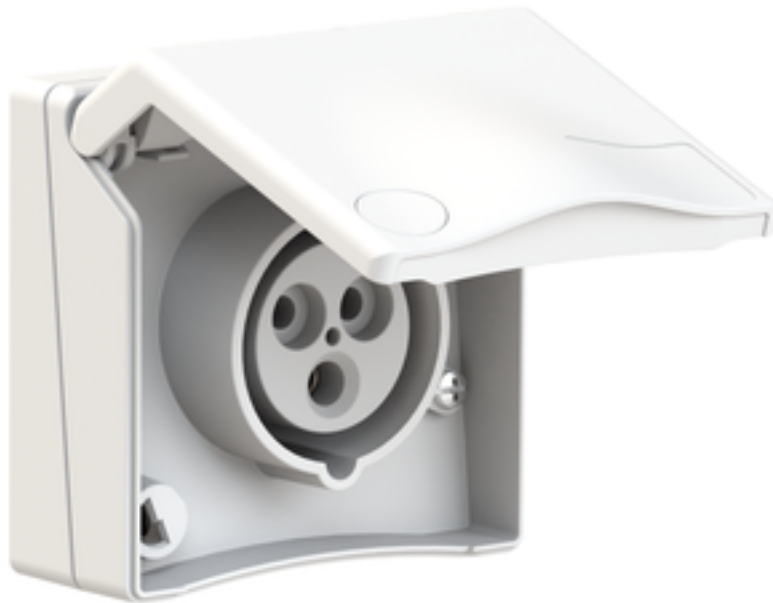


panel mounting socket outlet, straight - flange 90x90,
fixing centers 60x60

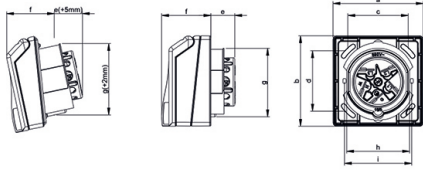


Product description	
BALS-Prd.-Nr	130010
EAN	4024941222235
Product category	Panel mounting socket outlet, straight
Current	16A
Number of poles	3p
Arrangement of phases	2P+PE
Position of earth contact	6 h
Voltage	200 - 250V~

Product description	
Frequency	50/60Hz
Protection degree	IP44
Colour code	blue RAL 5015
Colour of appliance	white similar to RAL 9016
Connection design	with screw terminal
Maximum conductor size	4,0 qmm
Cable entry	other
Height	90mm
Width	90mm
Depth	71mm
Flange size vertical in mm	90mm
Flange size horizontal in mm	90mm
Drill hole dist. vertical mm	60mm
Drill hole dist. horizontal mm	60mm
Material of enclosure	ABS + Polycarbonate
Contacts	the contacts are brass nickel plated

Additional technical information	
	For mounting in cable trunkings, Architecture programme TH, hinged lid with labelling field (optional: key lock)

Logistics data	
Weight/pcs	0.196 kg / Piece
Packaging	Bag
Content amount	1 ST
EAN	4024941222235
Length	71 mm
Width	90 mm
Height	90 mm
Weight	0.197 kg
Volume	575.1 ccm
Packaging	Carton
Content amount	6 ST
EAN	4024941222556
Length	370 mm
Width	218 mm
Height	125 mm
Weight	1.349 kg
Volume	9,329.4 ccm



Ampere Poles	16 3	16 4	16 5	32 5	Schutzk. Domestic
a	90,0	90,0	90,0	90,0	90,0
b	90,0	90,0	90,0	90,0	90,0
c	60,0	60,0	60,0	60,0	60,0
d	60,0	60,0	60,0	60,0	60,0
e	23,0	24,0	24,0	36,0	16,0
f	48,0	48,0	48,0	48,0	48,0
g	66,0	66,0	69,0	78,0	66,0
h	63,0	63,0	63,0	74,0	63,0
i	67,0	67,0	67,0	-	67,0
Cond. mm ² min.	1,0	1,0	1,0	2,5	1,0
Cond. mm ² max.	4,0	4,0	4,0	10	2,5

4MB465

