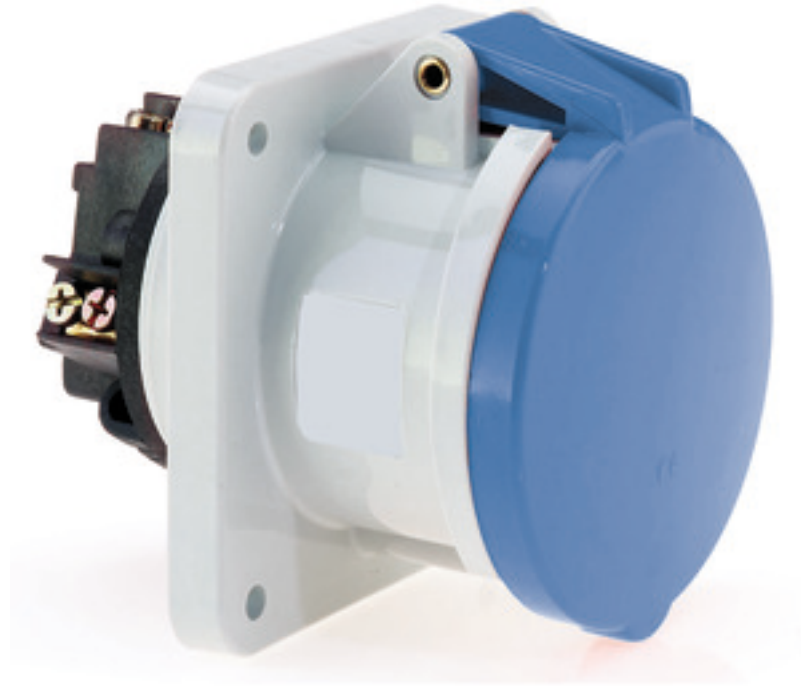


Panel mounting socket outlet straight - flange 107x100 fixing centers 85x77

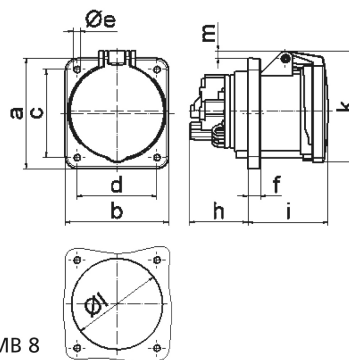


| Product description | |
|---------------------------|--|
| BALS-Prd.-Nr | 1305 |
| EAN | 4024941013055 |
| Product category | Panel mounting socket outlet, straight |
| Current | 63A |
| Number of poles | 5p |
| Arrangement of phases | 3p+N+PE |
| Position of earth contact | 9 h |
| Voltage | 120/208 - 144/250V~ |

| Product description | |
|--------------------------------|--|
| Frequency | 50/60Hz |
| Protection degree | IP44 |
| Colour code | blue RAL 5015 |
| Colour of appliance | Hinged lid blue RAL 5015, Enclosure grey RAL 7035 |
| Connection design | screw terminal as box terminal with Kontex-contact |
| Maximum conductor size | 25.0 qmm |
| Cable entry | other |
| Height | 114mm |
| Width | 100mm |
| Depth | 134mm |
| Flange size vertical in mm | 107mm |
| Flange size horizontal in mm | 100mm |
| Drill hole dist. vertical mm | 85mm |
| Drill hole dist. horizontal mm | 77mm |
| Material of enclosure | Polyamide |
| Contacts | the contact carrier is made of high temperature resistant material, the contacts are brass nickel plated |

| Logistics data | |
|----------------|-----------------|
| Weight/pcs | 0.53 kg / Piece |
| Packaging | Bag |
| Content amount | 1 ST |

| Logistics data | |
|----------------|---------------|
| EAN | 4024941013055 |
| Length | 135 mm |
| Width | 101 mm |
| Height | 115 mm |
| Weight | 0.531 kg |
| Volume | 1,568.025 ccm |
| Packaging | Carton |
| Content amount | 5 ST |
| EAN | 4024941829137 |
| Length | 258 mm |
| Width | 183 mm |
| Height | 212 mm |
| Weight | 2.799 kg |
| Volume | 8,750 ccm |



4 MB 8

| Ampere | 63 | 63 | 63 | | | |
|----------------------------|-------|-------|-------|--|--|--|
| Polzahl | 3 | 4 | 5 | | | |
| a | 107,0 | 107,0 | 107,0 | | | |
| b | 100,0 | 100,0 | 100,0 | | | |
| c | 85,0 | 85,0 | 85,0 | | | |
| d | 77,0 | 77,0 | 77,0 | | | |
| e ø | 6,5 | 6,5 | 6,5 | | | |
| f | 12,0 | 12,0 | 12,0 | | | |
| h | 56,5 | 56,5 | 56,5 | | | |
| i | 77,0 | 77,0 | 77,0 | | | |
| k | 110,0 | 110,0 | 110,0 | | | |
| l ø | 88,0 | 88,0 | 88,0 | | | |
| m | 7,0 | 7,0 | 7,0 | | | |
| Leiter mm ² min | 6 | 6 | 6 | | | |
| Leiter mm ² max | 25 | 25 | 25 | | | |