

Flush mounting socket outlet - flange 90x90

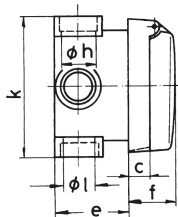
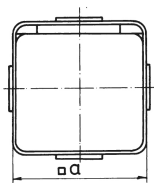


Product description	
BALS-Prd.-Nr	142-BE
EAN	4024941945608
Product category	Flush mounting socket outlet
Current	32A
Number of poles	5p
Arrangement of phases	3p+N+PE
Position of earth contact	6 h
Voltage	200/346 - 240/415V~
Frequency	50/60Hz

Product description	
Protection degree	IP44
Colour code	red RAL 3000
Colour of appliance	Hinged lid pearlwhite RAL 1013, Enclosure pearl white RAL 1013
Connection design	with screw terminal
Maximum conductor size	10,0 qmm
Cable entry	other
Height	90mm
Width	90mm
Depth	110mm
Flange size vertical in mm	90mm
Flange size horizontal in mm	90mm
Drill hole dist. vertical mm	47mm
Drill hole dist. horizontal mm	47mm
Material of enclosure	Polyamide
Contacts	the contact carrier is made of polyamide, the contacts are brass nickel plated

Logistics data	
Weight/pcs	0.4 kg / Piece
Packaging	Bag
Content amount	1 ST
EAN	4024941945608

Logistics data	
Length	110 mm
Width	90 mm
Height	90 mm
Weight	0.401 kg
Volume	891 ccm
Packaging	Carton
Content amount	5 ST
EAN	4024941945615
Length	295 mm
Width	185 mm
Height	215 mm
Weight	2.164 kg
Volume	9,975 ccm



4 MB 15

Ampere Polzahl	16 3	16 5	32 5			
a □	91,0	91,0	91,0			
c	15,2	15,2	29,0			
e	50,0	50,0	63,0			
f	30,0	30,0	47,0			
h ø	18,5	18,5	22,5			
k	91,0	91,0	109,0			
l ø	18,5	18,5	18,5			
Leiter mm² min	1,5	1,5	2,5			
Leiter mm² max	4	4	10			

