

# flush mounting socket outlet - flange 91x91, fixing centers 53x53

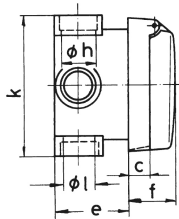
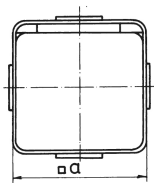


| Product description       |                              |
|---------------------------|------------------------------|
| BALS-Prd.-Nr              | 146                          |
| EAN                       | 4024941001465                |
| Product category          | Flush mounting socket outlet |
| Current                   | 16A                          |
| Number of poles           | 5p                           |
| Arrangement of phases     | 3p+N+PE                      |
| Position of earth contact | 6 h                          |
| Voltage                   | 200/346 - 240/415V~          |

| Product description            |  |
|--------------------------------|--|
| Frequency                      | 50/60Hz  |
| Protection degree              | IP44   |
| Colour code                    | red RAL 3000   |
| Colour of appliance            | Hinged lid grey RAL 7035, Enclosure grey RAL 7035                |
| Connection design              | with screw terminal  |
| Maximum conductor size         | 4,0 qmm  |
| Cable entry                    | other  |
| Height                         | 91mm   |
| Width                          | 91mm   |
| Depth                          | 80mm   |
| Flange size vertical in mm     | 91mm   |
| Flange size horizontal in mm   | 91mm   |
| Drill hole dist. vertical mm   | 53mm   |
| Drill hole dist. horizontal mm | 53mm   |
| Material of enclosure          | Polyamide  |
| Contacts                       | The contact carrier is made of polyamide, The contacts are brass |

| Logistics data |                  |
|----------------|------------------|
| Weight/pcs     | 0.244 kg / Piece |
| Packaging      | Bag              |
| Content amount | 1 ST             |

| Logistics data |               |
|----------------|---------------|
| EAN            | 4024941001465 |
| Length         | 80 mm         |
| Width          | 91 mm         |
| Height         | 91 mm         |
| Weight         | 0.245 kg      |
| Volume         | 662.48 ccm    |
| Packaging      | Carton        |
| Content amount | 10 ST         |
| EAN            | 4024941968768 |
| Length         | 258 mm        |
| Width          | 183 mm        |
| Height         | 212 mm        |
| Weight         | 2.592 kg      |
| Volume         | 8,750 ccm     |



4 MB 15

| Ampere Polzahl | 16<br>3 | 16<br>5 | 32<br>5 |  |  |  |
|----------------|---------|---------|---------|--|--|--|
| a □            | 91,0    | 91,0    | 91,0    |  |  |  |
| c              | 15,2    | 15,2    | 29,0    |  |  |  |
| e              | 50,0    | 50,0    | 63,0    |  |  |  |
| f              | 30,0    | 30,0    | 47,0    |  |  |  |
| h ø            | 18,5    | 18,5    | 22,5    |  |  |  |
| k              | 91,0    | 91,0    | 109,0   |  |  |  |
| l ø            | 18,5    | 18,5    | 18,5    |  |  |  |
| Leiter mm² min | 1,5     | 1,5     | 2,5     |  |  |  |
| Leiter mm² max | 4       | 4       | 10      |  |  |  |
|                |         |         |         |  |  |  |
|                |         |         |         |  |  |  |
|                |         |         |         |  |  |  |

