

Flush mounting socket outlet - flange 91x91 fixing centers 53x53

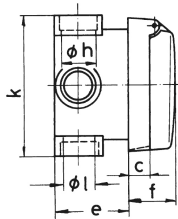
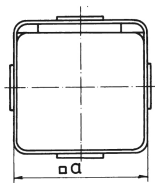


Product description	
BALS-Prd.-Nr	147
EAN	4024941001472
Product category	Flush mounting socket outlet
Current	16A
Number of poles	5p
Arrangement of phases	3p+N+PE
Position of earth contact	9 h
Voltage	120/208 - 144/250V~

Product description	
Frequency	50/60Hz
Protection degree	IP44
Colour code	blue RAL 5015
Colour of appliance	Hinged lid grey RAL 7035, Enclosure grey RAL 7035
Connection design	with screw terminal
Maximum conductor size	4,0 qmm
Cable entry	other
Height	91mm
Width	91mm
Depth	80mm
Flange size vertical in mm	91mm
Flange size horizontal in mm	91mm
Drill hole dist. vertical mm	53mm
Drill hole dist. horizontal mm	53mm
Material of enclosure	Polyamide
Contacts	the contact carrier is made of polyamide, the contacts are brass

Logistics data	
Weight/pcs	0.25 kg / Piece
Packaging	Bag
Content amount	1 ST

Logistics data	
EAN	4024941001472
Length	80 mm
Width	91 mm
Height	91 mm
Weight	0.251 kg
Volume	1,746.154 ccm
Packaging	Carton
Content amount	10 ST
EAN	4024941831215
Length	258 mm
Width	183 mm
Height	212 mm
Weight	2.649 kg
Volume	8,750 ccm



4 MB 15

Ampere Polzahl	16 3	16 5	32 5			
a □	91,0	91,0	91,0			
c	15,2	15,2	29,0			
e	50,0	50,0	63,0			
f	30,0	30,0	47,0			
h ø	18,5	18,5	22,5			
k	91,0	91,0	109,0			
l ø	18,5	18,5	18,5			
Leiter mm² min	1,5	1,5	2,5			
Leiter mm² max	4	4	10			