

wall mounting socket outlet, fused - housing dimensions 225x118, with fuse base D II



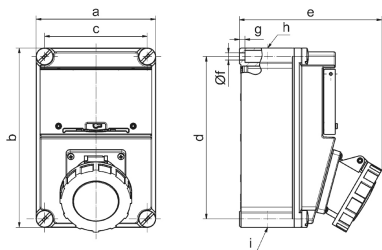
Product description	
BALS-Prd.-Nr	15179
EAN	4024941151795
Product category	Quick-Connect wall mounting socket outlet, fused
Current	32A
Number of poles	4p
Arrangement of phases	3P+PE
Position of earth contact	7 h
Voltage	480 - 500V~

Product description	
Frequency	50/60Hz
Protection degree	IP67
Colour code	black RAL 9005
Colour of appliance	Hinged lid black RAL 9005, Housing bottom grey RAL 7035, Housing top grey RAL 7035, Bayonet ring grey RAL 7035, Operating window smoky topaz, Housing screws grey RAL 7035
Connection design	screwless spring terminals with Kontex-Kontakt
Maximum conductor size	10,0 qmm
Cable entry	1xM40 top and 1xM32/M40 bottom
Height	276mm
Width	184mm
Depth	208mm
Dimension of enclosure	276x184 mm (HxW)
Material of enclosure	Polyester RAL 7035
Contacts	The contacts are brass, The contact carrier is made of polyamide

Additional technical information	
	cable entry two at top and two at bottom (open)
	With fuse base 3 pole D II

Logistics data	
Weight/pcs	1.916 kg / Piece

Logistics data	
Packaging	Carton
Content amount	1 ST
EAN	4024941151795
Length	335 mm
Width	283 mm
Height	268 mm
Weight	2.266 kg
Volume	21,937.5 ccm



14 MB 36

Ampere	32	32	63	63				
Polzahl	4	5	4	5				
a	184,0	184,0	184,0	184,0				
b	276,0	276,0	276,0	276,0				
c	158,0	158,0	158,0	158,0				
d	250,0	250,0	250,0	250,0				
e	205,0	205,0	220,0	220,0				
f \varnothing	11,0	11,0	11,0	11,0				
g	8,5	8,5	8,5	8,5				
h	M40	M40	M40	M40				
i	M40/32	M40/32	M40/32	M40/32				