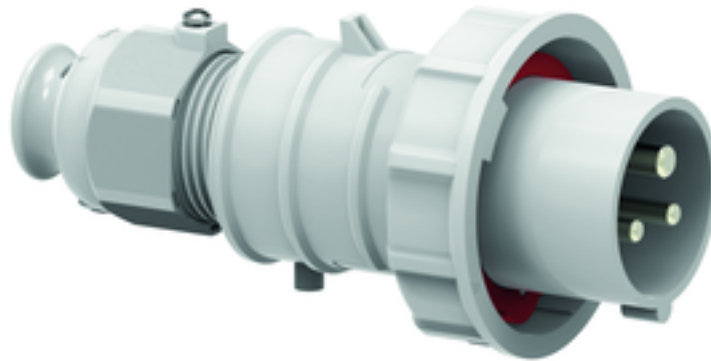
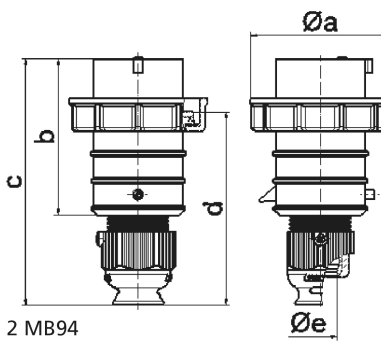


plug - with screwless terminals, for harsh applications



Product description	
BALS-Prd.-Nr	21593
EAN	4024941215930
Product category	QUICK-CONNECT TE plug
Current	16A
Number of poles	3p
Arrangement of phases	2P+PE
Position of earth contact	12 h
Voltage	> 50V~ power supply after isolating transformer
Frequency	50/60Hz
Protection degree	IP67
Colour code	grey RAL 7035
Colour of appliance	Cable gland grey RAL 7035, Bayonet ring grey RAL 7035, Housing cover grey RAL 7035, Collar grey RAL 7035
Connection design	screwless spring-clamp technology

Product description	
Maximum conductor size	2,5 qmm
Cable entry	with cable gland
Height	147mm
Width	71mm
Depth	71mm
Material of enclosure	Polyamide
Contacts	The contact carrier is made of high temperature resistant material, the contacts are brass nickel plated



Ampere	16	16	16	32	32	32
Polzahl	3	4	5	3	4	5
a Ø	70,0	78,0	86,0	94,0	94,0	101,0
b	95,0	95,0	97,0	118,0	118,0	117,0
c	145,0	145,0	152,0	178,0	178,0	181,0
d	111,0	111,0	119,0	136,0	136,0	138,5
e Ø	18,0	18,0	21,0	23,0	23,0	27,0
Leiter mm ² min	1	1	1	2,5	2,5	2,5
Leiter mm ² max	2,5	2,5	2,5	6	6	6

2 MB94