

Wall mounting appliance inlet - housing dimensions 126x83



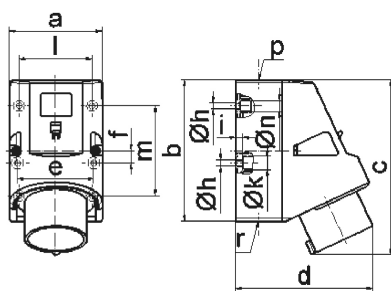
Product description	
BALS-Prd.-Nr	24168
EAN	4024941241687
Product category	Wall mounting appliance inlet
Current	32A
Number of poles	3p
Arrangement of phases	2P+PE
Position of earth contact	6 h
Voltage	200 - 250V~

Product description	
Frequency	50/60Hz
Protection degree	IP44
Colour code	blue RAL 5015
Colour of appliance	Collar blue RAL 5015, Housing bottom grey RAL 7035, Housing top grey RAL 7035
Connection design	with screw terminal
Maximum conductor size	6,0 qmm
Cable entry	1xM25 top, 2xM25 bottom
Height	166mm
Width	83mm
Depth	128mm
Dimension of enclosure	126x83 mm (HxW)
Material of enclosure	Polyamide
Contacts	the contact carrier is made of polyamide, the contacts are brass

Additional technical information	
	The cable entry is one at top open and two at bottom closed
	Lower part of housing rotatable by 180°
	4 cut out fixing holes in the lower part of housing

Logistics data	
Weight/pcs	0.318 kg / Piece

Logistics data	
Packaging	Bag
Content amount	1 ST
EAN	4024941241687
Length	128 mm
Width	83 mm
Height	166 mm
Weight	0.319 kg
Volume	1,763.584 ccm
Packaging	Carton
Content amount	10 ST
EAN	4024941968492
Length	330 mm
Width	216 mm
Height	260 mm
Weight	3.406 kg
Volume	17,062.5 ccm



5 MB 45

Ampere	16	32	32	32
Polzahl	5	3	4	5
a	83,0	83,0	83,0	83,0
b	126,0	126,0	126,0	126,0
c	155,5	165,0	165,0	166,0
d	122,0	128,0	128,0	130,0
e	68,0	68,0	68,0	68,0
f	11,0	11,0	11,0	11,0
h ø	5,5	5,5	5,5	5,5
i	6,5	6,5	6,5	6,5
k ø	12,0	12,0	12,0	12,0
l	65,0	65,0	65,0	65,0
m	80,0	80,0	80,0	80,0
n ø	10	10,0	10,0	10,0
p	M25	M25	M25	M25
r	2xM25	2xM25	2xM25	2xM25
Leiter mm ² min	1	2,5	2,5	2,5
Leiter mm ² max	2,5	6	6	6