

wall mounting appliance inlet - housing dimensions 100x75



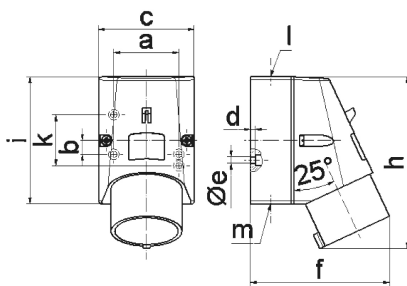
| Product description | |
|---------------------------|-------------------------------|
| BALS-Prd.-Nr | 249 |
| EAN | 4024941002493 |
| Product category | Wall mounting appliance inlet |
| Current | 16A |
| Number of poles | 4p |
| Arrangement of phases | 3P+PE |
| Position of earth contact | 6 h |
| Voltage | 380 - 415V~ |

| Product description | |
|------------------------|--|
| Frequency | 50/60Hz |
| Protection degree | IP44 |
| Colour code | red RAL 3000 |
| Colour of appliance | Housing bottom grey RAL 7035, Housing top red RAL 3000 |
| Connection design | with screw terminal |
| Maximum conductor size | 2,5 qmm |
| Cable entry | top entry M20 |
| Height | 135mm |
| Width | 75mm |
| Depth | 106mm |
| Dimension of enclosure | 100x75 mm (HxW) |
| Material of enclosure | Polyamide |
| Contacts | The contact carrier is made of polyamide, The contacts are brass |

| Additional technical information | |
|----------------------------------|---|
| | The cable entry is one at top open and one at bottom and one rear side closed |

| Logistics data | |
|----------------|------------------|
| Weight/pcs | 0.225 kg / Piece |
| Packaging | Bag |
| Content amount | 1 ST |

| Logistics data | |
|----------------|---------------|
| EAN | 4024941002493 |
| Length | 106 mm |
| Width | 75 mm |
| Height | 135 mm |
| Weight | 0.226 kg |
| Volume | 1,073.25 ccm |
| Packaging | Carton |
| Content amount | 10 ST |
| EAN | 4024941967594 |
| Length | 387 mm |
| Width | 222 mm |
| Height | 150 mm |
| Weight | 2.443 kg |
| Volume | 11,029.5 ccm |



5 MB 47

| Ampere Polzahl | 16 3 | 16 4 | 16 5 |
|----------------------------|---------|---------|---------|
| a | 51,0 | 59,0 | 59,0 |
| b | - | 11,0 | 11,0 |
| c | 64,0 | 75,0 | 75,0 |
| d | 4,0 | 4,0 | 4,0 |
| e ø | 4,1 | 5,1 | 5,1 |
| f | 93,0 | 106,0 | 110,0 |
| h | 122,0 | 135,0 | 135,0 |
| i | 87,0 | 100,0 | 100,0 |
| k | 40,0 | - | - |
| l | M20 | M20 | M20 |
| m | für M20 | für M20 | für M20 |
| Leiter mm ² min | 1 | 1 | 1 |
| Leiter mm ² max | 2,5 | 2,5 | 2,5 |