

flush-mounting caravan appliance inlet - housing dimensions 163x102, black, swing-type plug



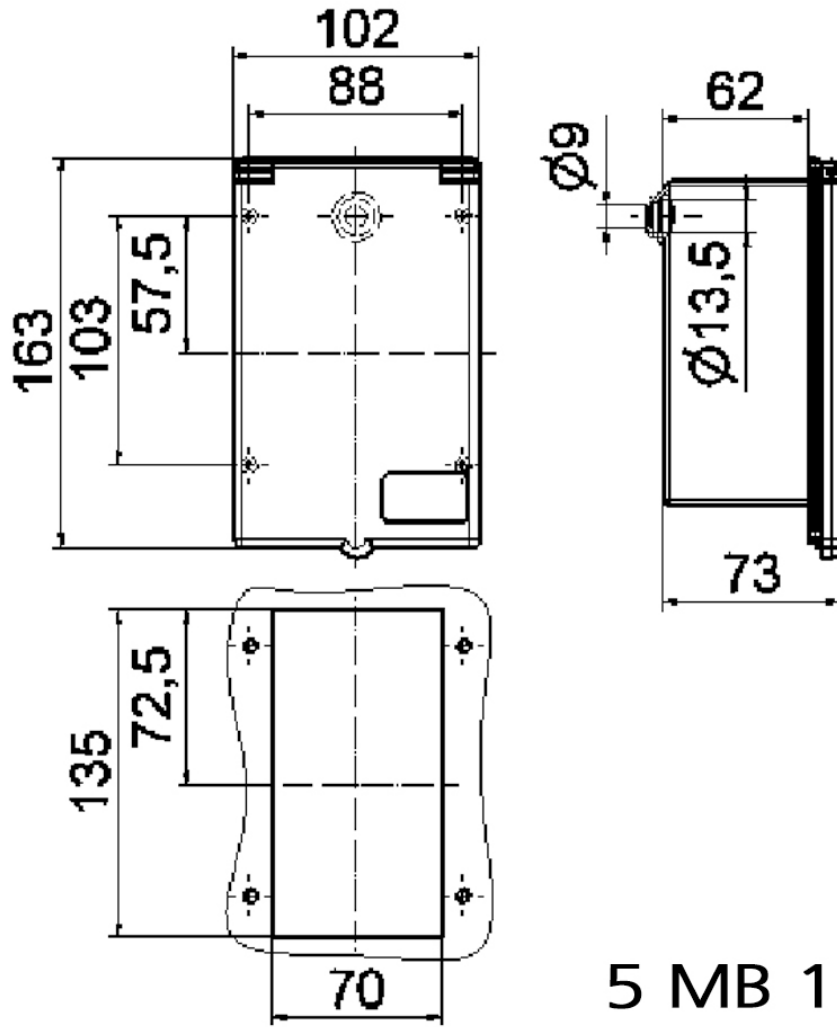
Product description	
BALS-Prd.-Nr	255
EAN	4024941002554
Product category	flush-mounting caravan appliance inlet
Current	16A
Number of poles	3p
Arrangement of phases	2P+PE
Position of earth contact	6 h
Voltage	200 - 250V~

Product description	
Frequency	50/60Hz
Protection degree	IP44
Colour code	black RAL 9005
Colour of appliance	Housing cover blue RAL 5015, Housing bottom blue RAL 5015, Collar blue RAL 5015
Connection design	with screw terminal
Maximum conductor size	2,5 qmm
Cable entry	up to diameter 13,5
Height	170mm
Width	102mm
Depth	75mm
Dimension of enclosure	163x102 mm (HxW)
Material of enclosure	ABS
Contacts	The contacts are brass, The contact carrier is made of polyamide

Additional technical information	
	The cable entry is one rear sided open, Fixing centers 103x88 built-in opening 135x70
	Pivotable plug, Housing with rubber gasket and frame for intermediate fixing

Logistics data	
Weight/pcs	0.334 kg / Piece

Logistics data	
Packaging	Bag
Content amount	1 ST
EAN	4024941002554
Length	75 mm
Width	102 mm
Height	170 mm
Weight	0.335 kg
Volume	1,300.5 ccm
Packaging	Carton
Content amount	10 ST
EAN	4024941968799
Length	330 mm
Width	216 mm
Height	260 mm
Weight	3.566 kg
Volume	17,062.5 ccm



5 MB 16