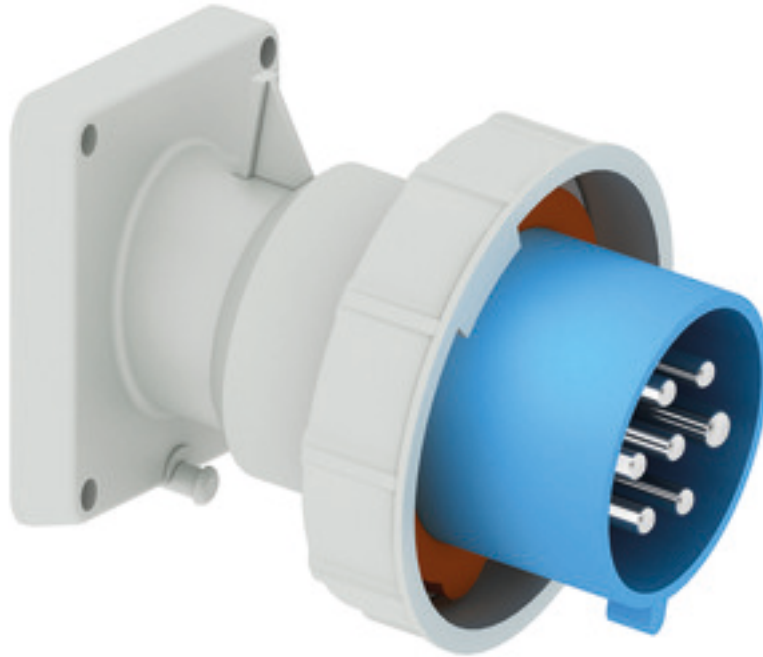


# Panel mounting appliance inlet angled - 7 poles flange 85x85

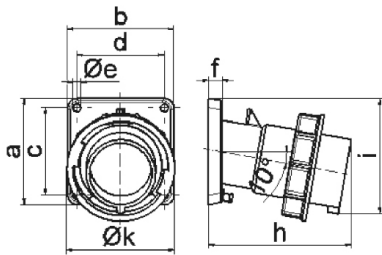


Product description	
BALS-Prd.-Nr	27119
EAN	4024941271196
Product category	TE panel mounting appliance inlet, angled
Current	32A
Number of poles	7p
Arrangement of phases	6p+PE
Position of earth contact	9 h
Voltage	230V~

Product description	
Frequency	50/60Hz
Protection degree	IP67
Colour code	blue RAL 5015
Colour of appliance	Collar blue RAL 5015, Bayonet ring grey RAL 7035, Enclosure grey RAL 7035
Connection design	with screw terminal
Maximum conductor size	6,0 qmm
Cable entry	other
Height	106mm
Width	107mm
Depth	127mm
Flange size vertical in mm	85mm
Flange size horizontal in mm	85mm
Drill hole dist. vertical mm	70mm
Drill hole dist. horizontal mm	70mm
Material of enclosure	Polyamide
Contacts	the contact carrier is made of high temperature resistant material, the contacts are brass nickel plated

Additional technical information	
	The inclination is 10°

Logistics data	
Weight/pcs	0.0 kg / Piece
Packaging	Bag
Content amount	1 ST
EAN	4024941271196
Length	127 mm
Width	107 mm
Height	106 mm
Weight	0.001 kg
Volume	1,440.434 ccm



5 MB 183

Ampere	16	32					
Polzahl	7	7					
a	85,0	85,0					
b	85,0	85,0					
c	70,0	70,0					
d	70,0	70,0					
e ø	6,3	6,3					
f	11,0	11,0					
h	116,0	127,0					
i	92,0	100,0					
k	86,5	101,5					
Leiter mm <sup>2</sup> min	1	2,5					
Leiter mm <sup>2</sup> max	2,5	6					