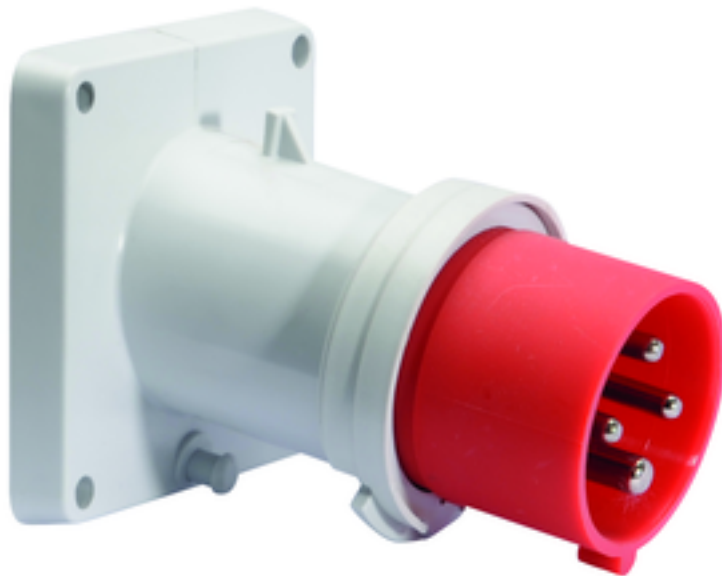


## Panel mounting appliance inlet, angled - flange 85x85, fixing centers 70x70

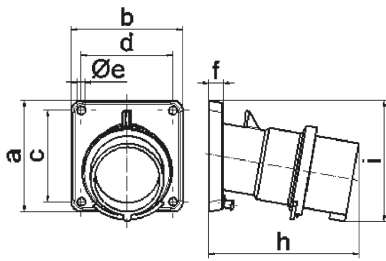


| Product description       |   |
|---------------------------|---|
| BALS-Prd.-Nr              | 27122   |
| EAN                       | 4024941271226   |
| Product category          | TE panel mounting appliance inlet Quick-Connect, angled |
| Current                   | 16A   |
| Number of poles           | 4p  |
| Arrangement of phases     | 3P+PE   |
| Position of earth contact | 6 h   |
| Voltage                   | 380 - 415V~   |

| Product description            |  |
|--------------------------------|--|
| Frequency                      | 50/60Hz  |
| Protection degree              | IP44   |
| Colour code                    | red RAL 3000   |
| Colour of appliance            | Collar red RAL 3000, Enclosure grey RAL 7035   |
| Connection design              | screwless spring-clamp technology  |
| Maximum conductor size         | 2,5 qmm  |
| Cable entry                    | other  |
| Height                         | 88mm   |
| Width                          | 85mm   |
| Depth                          | 109mm  |
| Flange size vertical in mm     | 85mm   |
| Flange size horizontal in mm   | 85mm   |
| Drill hole dist. vertical mm   | 70mm   |
| Drill hole dist. horizontal mm | 70mm   |
| Material of enclosure          | Polyamide  |
| Contacts                       | The contact carrier is made of high temperature resistant material, the contacts are brass nickel plated |

| Additional technical information |                        |
|----------------------------------|------------------------|
|                                  | The inclination is 10° |

| Logistics data |                  |
|----------------|------------------|
| Weight/pcs     | 0.176 kg / Piece |
| Packaging      | Bag              |
| Content amount | 1 ST             |
| EAN            | 4024941271226    |
| Length         | 109 mm           |
| Width          | 85 mm            |
| Height         | 88 mm            |
| Weight         | 0.177 kg         |
| Volume         | 815.32 ccm       |
| Packaging      | Carton           |
| Content amount | 10 ST            |
| EAN            | 4024941833707    |
| Length         | 258 mm           |
| Width          | 183 mm           |
| Height         | 212 mm           |
| Weight         | 1.912 kg         |
| Volume         | 8,750 ccm        |



| Ampere Polzahl             | 16<br>3 | 16<br>4 | 16<br>5 | 32<br>3 | 32<br>4 | 32<br>5 |
|----------------------------|---------|---------|---------|---------|---------|---------|
| a                          | 85,0    | 85,0    | 85,0    | 85,0    | 85,0    | 85,0    |
| b                          | 85,0    | 85,0    | 85,0    | 85,0    | 85,0    | 85,0    |
| c                          | 70,0    | 70,0    | 70,0    | 70,0    | 70,0    | 70,0    |
| d                          | 70,0    | 70,0    | 70,0    | 70,0    | 70,0    | 70,0    |
| e ø                        | 6,3     | 6,3     | 6,3     | 6,3     | 6,3     | 6,3     |
| f                          | 11,0    | 11,0    | 11,0    | 11,0    | 11,0    | 11,0    |
| h                          | 104,0   | 110,0   | 116,0   | 121,0   | 121,0   | 127,0   |
| i                          | 83,0    | 90,0    | 92,0    | 96,0    | 96,0    | 100,0   |
| Leiter mm <sup>2</sup> min | 1       | 1       | 1       | 2,5     | 2,5     | 2,5     |
| Leiter mm <sup>2</sup> max | 2,5     | 2,5     | 2,5     | 6       | 6       | 6       |
|                            |         |         |         |         |         |         |
|                            |         |         |         |         |         |         |

5 MB 21