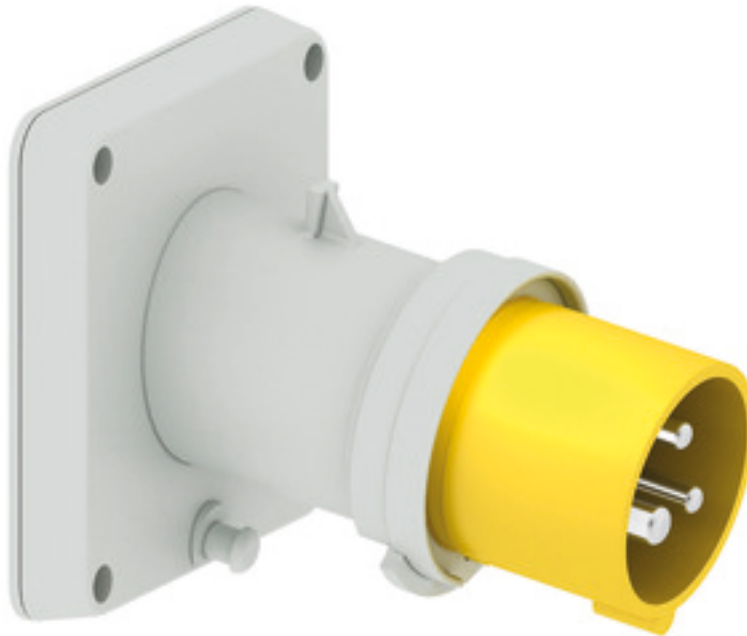


## Panel mounting appliance inlet angled - flange 85x85 fixing centers 70x70



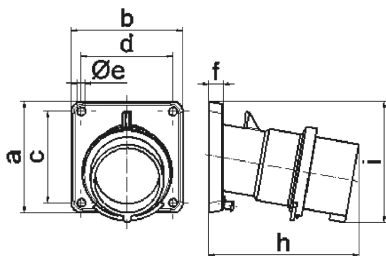
| Product description       |   |
|---------------------------|---|
| BALS-Prd.-Nr              | 27209   |
| EAN                       | 4024941272094   |
| Product category          | TE panel mounting appliance inlet QUICK-CONNECT, angled |
| Current                   | 16A   |
| Number of poles           | 3p  |
| Arrangement of phases     | 2P+PE   |
| Position of earth contact | 4 h   |
| Voltage                   | 100 - 130V~   |

| Product description            |  |
|--------------------------------|--|
| Frequency                      | 50/60Hz  |
| Protection degree              | IP44   |
| Colour code                    | yellow RAL 1012  |
| Colour of appliance            | Collar yellow RAL 1012, Enclosure grey RAL 7035  |
| Connection design              | screwless spring-clamp technology  |
| Maximum conductor size         | 2,5 qmm  |
| Height                         | 85mm   |
| Width                          | 85mm   |
| Depth                          | 103mm  |
| Flange size vertical in mm     | 85mm   |
| Flange size horizontal in mm   | 85mm   |
| Drill hole dist. vertical mm   | 70mm   |
| Drill hole dist. horizontal mm | 70mm   |
| Material of enclosure          | Polyamide  |
| Contacts                       | the contact carrier is made of high temperature resistant material, the contacts are brass nickel plated |

| Additional technical information |                        |
|----------------------------------|------------------------|
|                                  | The inclination is 10° |

| Logistics data |                  |
|----------------|------------------|
| Weight/pcs     | 0.175 kg / Piece |

| Logistics data |               |
|----------------|---------------|
| Packaging      | Bag           |
| Content amount | 1 ST          |
| EAN            | 4024941272094 |
| Length         | 103 mm        |
| Width          | 85 mm         |
| Height         | 85 mm         |
| Weight         | 0.176 kg      |
| Volume         | 744.175 ccm   |
| Packaging      | Carton        |
| Content amount | 10 ST         |
| EAN            | 4024941833585 |
| Length         | 245 mm        |
| Width          | 177 mm        |
| Height         | 185 mm        |
| Weight         | 1.883 kg      |
| Volume         | 7,140 ccm     |



5 MB 21

| Ampere                     | 16    | 16    | 16    | 32    | 32    | 32    |
|----------------------------|-------|-------|-------|-------|-------|-------|
| Polzahl                    | 3     | 4     | 5     | 3     | 4     | 5     |
| a                          | 85,0  | 85,0  | 85,0  | 85,0  | 85,0  | 85,0  |
| b                          | 85,0  | 85,0  | 85,0  | 85,0  | 85,0  | 85,0  |
| c                          | 70,0  | 70,0  | 70,0  | 70,0  | 70,0  | 70,0  |
| d                          | 70,0  | 70,0  | 70,0  | 70,0  | 70,0  | 70,0  |
| e ø                        | 6,3   | 6,3   | 6,3   | 6,3   | 6,3   | 6,3   |
| f                          | 11,0  | 11,0  | 11,0  | 11,0  | 11,0  | 11,0  |
| h                          | 104,0 | 110,0 | 116,0 | 121,0 | 121,0 | 127,0 |
| i                          | 83,0  | 90,0  | 92,0  | 96,0  | 96,0  | 100,0 |
| Leiter mm <sup>2</sup> min | 1     | 1     | 1     | 2,5   | 2,5   | 2,5   |
| Leiter mm <sup>2</sup> max | 2,5   | 2,5   | 2,5   | 6     | 6     | 6     |
|                            |       |       |       |       |       |       |
|                            |       |       |       |       |       |       |