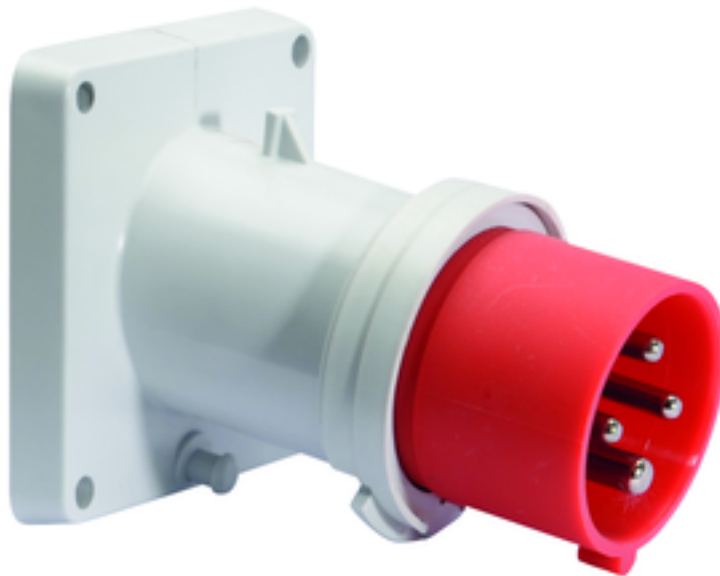


Panel mounting appliance inlet, angled - flange 85x85, fixing centers 70x70



| Product description | |
|---------------------------|---|
| BALS-Prd.-Nr | 27223 |
| EAN | 4024941272230 |
| Product category | TE panel mounting appliance inlet Quick-Connect, angled |
| Current | 32A |
| Number of poles | 4p |
| Arrangement of phases | 3P+PE |
| Position of earth contact | 6 h |
| Voltage | 380 - 415V~ |

| Product description | |
|--------------------------------|--|
| Frequency | 50/60Hz |
| Protection degree | IP44 |
| Colour code | red RAL 3000 |
| Colour of appliance | Collar red RAL 3000, Enclosure grey RAL 7035 |
| Connection design | screwless spring-clamp technology |
| Maximum conductor size | 6,0 qmm |
| Cable entry | other |
| Height | 96mm |
| Width | 85mm |
| Depth | 120mm |
| Flange size vertical in mm | 85mm |
| Flange size horizontal in mm | 85mm |
| Drill hole dist. vertical mm | 70mm |
| Drill hole dist. horizontal mm | 70mm |
| Material of enclosure | Polyamide |
| Contacts | The contact carrier is made of high temperature resistant material, the contacts are brass nickel plated |

| Additional technical information | |
|----------------------------------|------------------------|
| | The inclination is 10° |

| Logistics data | |
|----------------|------------------|
| Weight/pcs | 0.246 kg / Piece |
| Packaging | Bag |
| Content amount | 1 ST |
| EAN | 4024941272230 |
| Length | 120 mm |
| Width | 85 mm |
| Height | 96 mm |
| Weight | 0.247 kg |
| Volume | 1,190.135 ccm |
| Packaging | Carton |
| Content amount | 10 ST |
| EAN | 4024941962117 |
| Length | 258 mm |
| Width | 183 mm |
| Height | 212 mm |
| Weight | 2.612 kg |
| Volume | 8,750 ccm |



| Ampere Polzahl | 16 3 | 16 4 | 16 5 | 32 3 | 32 4 | 32 5 |
|----------------------------|---------|---------|---------|---------|---------|---------|
| a | 85,0 | 85,0 | 85,0 | 85,0 | 85,0 | 85,0 |
| b | 85,0 | 85,0 | 85,0 | 85,0 | 85,0 | 85,0 |
| c | 70,0 | 70,0 | 70,0 | 70,0 | 70,0 | 70,0 |
| d | 70,0 | 70,0 | 70,0 | 70,0 | 70,0 | 70,0 |
| e ø | 6,3 | 6,3 | 6,3 | 6,3 | 6,3 | 6,3 |
| f | 11,0 | 11,0 | 11,0 | 11,0 | 11,0 | 11,0 |
| h | 104,0 | 110,0 | 116,0 | 121,0 | 121,0 | 127,0 |
| i | 83,0 | 90,0 | 92,0 | 96,0 | 96,0 | 100,0 |
| Leiter mm ² min | 1 | 1 | 1 | 2,5 | 2,5 | 2,5 |
| Leiter mm ² max | 2,5 | 2,5 | 2,5 | 6 | 6 | 6 |
| | | | | | | |
| | | | | | | |

5 MB 21