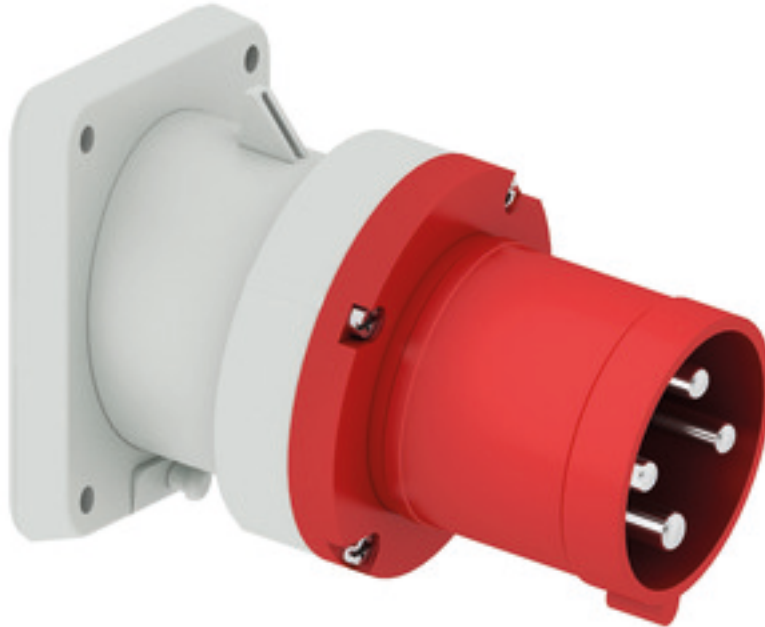


Panel mounting appliance inlet angled - flange 107x100 fixing centers 85x77

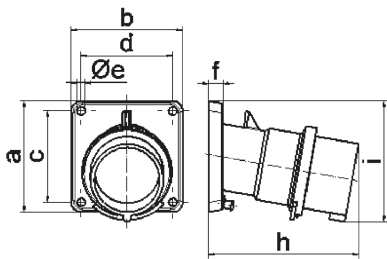


Product description	
BALS-Prd.-Nr	2775
EAN	4024941027755
Product category	TE panel mounting appliance inlet, angled
Current	63A
Number of poles	4p
Arrangement of phases	3P+PE
Position of earth contact	6 h
Voltage	380 - 415V~

Product description	
Frequency	50/60Hz
Protection degree	IP44
Colour code	red RAL 3000
Colour of appliance	Collar red RAL 3000, Enclosure grey RAL 7035
Connection design	screw terminal as box terminal
Maximum conductor size	16,0 qmm
Cable entry	other
Height	118mm
Width	100mm
Depth	155mm
Flange size vertical in mm	107mm
Flange size horizontal in mm	100mm
Drill hole dist. vertical mm	85mm
Drill hole dist. horizontal mm	77mm
Material of enclosure	Polyamide
Contacts	the contact carrier is made of high temperature resistant material, the contacts are brass nickel plated

Additional technical information	
	The inclination is 10°

Logistics data	
Weight/pcs	0.569 kg / Piece
Packaging	Bag
Content amount	1 ST
EAN	4024941027755
Length	155 mm
Width	100 mm
Height	118 mm
Weight	0.57 kg
Volume	1,829 ccm
Packaging	Carton
Content amount	5 ST
EAN	4024941958950
Length	325 mm
Width	217 mm
Height	210 mm
Weight	3.051 kg
Volume	13,588.4 ccm



5 MB 21

Ampere	63	63	63			
Polzahl	3	4	5			
a	107,0	107,0	107,0			
b	100,0	100,0	100,0			
c	85,0	85,0	85,0			
d	77,0	77,0	77,0			
e \varnothing	6,5	6,5	6,5			
f	12,0	12,0	12,0			
h	155,0	155,0	155,0			
i	118,0	118,0	118,0			
Leiter mm ² min	6	6	6			
Leiter mm ² max	16	16	16			