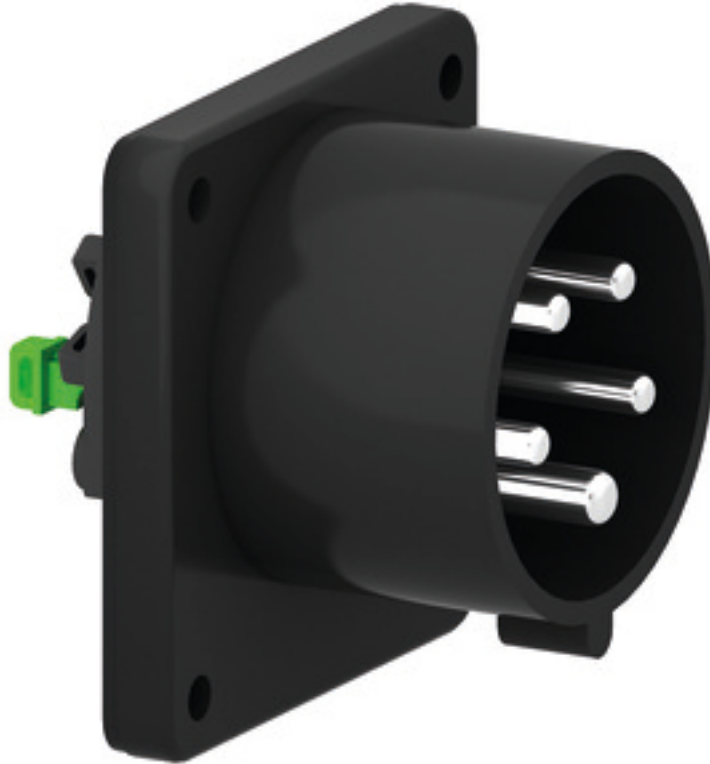


# Flanged appliance inlet - black for event technology - for event technology

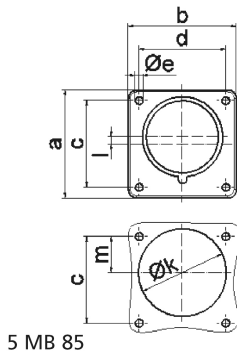


| Product description       |   |
|---------------------------|---|
| BALS-Prd.-Nr              | 28314   |
| EAN                       | 4024941938181                                   |
| Product category          | flanged appliance inlet QUICK-CONNECT, straight |
| Current                   | 16A   |
| Number of poles           | 5p  |
| Arrangement of phases     | 3p+N+PE   |
| Position of earth contact | 6 h   |
| Voltage                   | 200/346 - 240/415V~                             |

| Product description            |  |
|--------------------------------|--|
| Frequency                      | 50/60Hz  |
| Protection degree              | IP44   |
| Colour code                    | red RAL 3000   |
| Colour of appliance            | Enclosure black RAL 9005   |
| Connection design              | screwless spring-clamp technology  |
| Maximum conductor size         | 2,5 qmm  |
| Cable entry                    | other  |
| Height                         | 75mm   |
| Width                          | 75mm   |
| Depth                          | 96mm   |
| Flange size vertical in mm     | 75mm   |
| Flange size horizontal in mm   | 75mm   |
| Drill hole dist. vertical mm   | 60mm   |
| Drill hole dist. horizontal mm | 60mm   |
| Material of enclosure          | Polyamide  |
| Contacts                       | the contacts are brass, the contact carrier is made of high temperature resistant material |

| Additional technical information |   |
|----------------------------------|---|
|                                  | Collar is brought out of center of the flange by 5 mm |

| Logistics data |                  |
|----------------|------------------|
| Weight/pcs     | 0.125 kg / Piece |
| Packaging      | Bag              |
| Content amount | 1 ST             |
| EAN            | 4024941938181    |
| Length         | 96 mm            |
| Width          | 75 mm            |
| Height         | 75 mm            |
| Weight         | 0.126 kg         |
| Volume         | 540 ccm          |
| Packaging      | Carton           |
| Content amount | 10 ST            |
| EAN            | 4024941840521    |
| Length         | 275 mm           |
| Width          | 175 mm           |
| Height         | 137 mm           |
| Weight         | 1.375 kg         |
| Volume         | 5,737.5 ccm      |



| Ampere                     | 16   | 16   | 16   | 32   | 32   | 32   |
|----------------------------|------|------|------|------|------|------|
| Polzahl                    | 3    | 4    | 5    | 3    | 4    | 5    |
| a                          | 75,0 | 75,0 | 75,0 | 75,0 | 75,0 | 75,0 |
| b                          | 75,0 | 75,0 | 75,0 | 75,0 | 75,0 | 75,0 |
| c                          | 60,0 | 60,0 | 60,0 | 60,0 | 60,0 | 60,0 |
| d                          | 60,0 | 60,0 | 60,0 | 60,0 | 60,0 | 60,0 |
| e ø                        | 5,5  | 5,5  | 5,5  | 5,5  | 5,5  | 5,5  |
| f                          | 7,0  | 7,0  | 7,0  | 7,0  | 7,0  | 7,0  |
| h                          | 43,0 | 43,0 | 43,0 | 53,0 | 53,0 | 53,0 |
| i                          | 39,0 | 39,0 | 39,0 | 43,0 | 43,0 | 43,0 |
| k ø                        | 42,0 | 48,0 | 61,0 | 57,0 | 57,0 | 60,0 |
| l                          | -    | -    | 5,0  | 2,0  | 2,0  | -    |
| m                          | 30,0 | 30,0 | 25,0 | 28,0 | 28,0 | 30,0 |
| Leiter mm <sup>2</sup> min | 1    | 1    | 1    | 2,5  | 2,5  | 2,5  |
| Leiter mm <sup>2</sup> max | 2,5  | 2,5  | 2,5  | 6    | 6    | 6    |