

Wall mounting socket outlet low voltage - housing dimensions 126x83

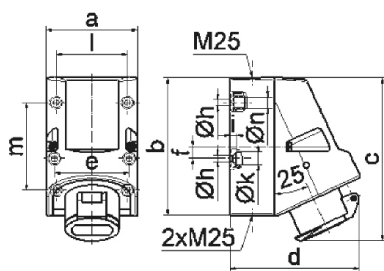


Product description	
BALS-Prd.-Nr	4146
EAN	4024941041461
Product category	ELV wall mounting socket outlet
Current	32A
Number of poles	2p
Arrangement of phases	2P
Position of earth contact	no minor keyway
Voltage	20 up to 25v

Product description	
Frequency	50/60Hz
Protection degree	IP44
Colour code	violet RAL 4005
Colour of appliance	Housing bottom grey RAL 7035, Housing top grey RAL 7035, Hinged lid violet RAL 4005, Collar grey RAL 7035
Connection design	with screw terminal
Maximum conductor size	10,0 qmm
Cable entry	1xM25 top, 2xM25 bottom
Height	150mm
Width	83mm
Depth	120mm
Dimension of enclosure	126x83 mm (HxW)
Material of enclosure	Polyamide
Contacts	the contact carrier is made of polyamide, the contacts are brass nickel plated

Additional technical information	
	The cable entry is one at top open and two at bottom closed
	Lower part of housing rotatable by 180°
	4 cut out fixing holes in the lower part of housing

Logistics data	
Weight/pcs	0.325 kg / Piece
Packaging	Bag
Content amount	1 ST
EAN	4024941041461
Length	120 mm
Width	83 mm
Height	150 mm
Weight	0.326 kg
Volume	1,494 ccm



16 MB 6

Ampere	16	16	32	32				
Polzahl	2	3	2	3				
a	83,0	83,0	83,0	83,0				
b	126,0	126,0	126,0	126,0				
c	149,0	149,0	149,0	149,0				
d	120,0	120,0	120,0	120,0				
e	68,0	68,0	68,0	68,0				
f	11,0	11,0	11,0	11,0				
h ø	5,5	5,5	5,5	5,5				
i	6,5	6,5	6,5	6,5				
k ø	12,0	12,0	12,0	12,0				
l	65,0	65,0	65,0	65,0				
m	80,0	80,0	80,0	80,0				
n ø	10,0	10,0	10,0	10,0				
Leiter mm ² min	4	4	4	4				
Leiter mm ² max	10	10	10	10				