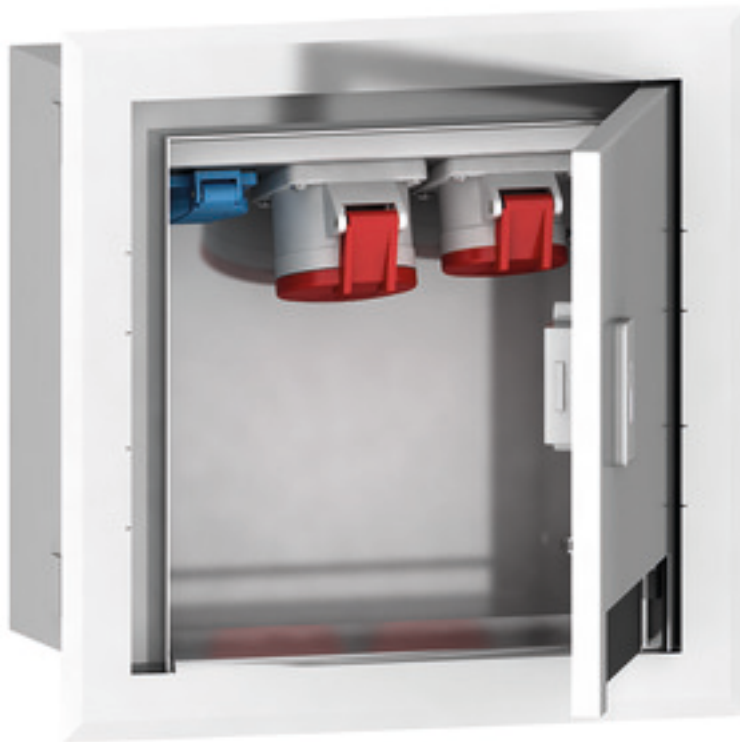


Flush-mounting housing - Flush mounting cabinets



Product description	
BALS-Prd.-Nr	560509
EAN	4024941195232
Product category	Flush mounting cabinets
Protection degree	IP44
Height	300mm
Width	300mm
Depth	200mm

Logistics data	
Weight/pcs	9.04 kg / Piece

Logistics data	
Packaging	Carton
Content amount	1 ST
EAN	4024941195232
Length	800 mm
Width	600 mm
Height	340 mm
Weight	10.39 kg
Volume	163,200 ccm

